

Newsletter May 2023



Dear Guests and Friends,

The Surf Season on Rhodes started early this year; we had already very nice winds from March onwards.

Expecting a windy and sunny summer, we look forward to welcoming you at the completely new Meltemi Windsurf Station, and at Anemos with its fully overhauled and extended storage for windsurf, kite & wing foil.

We have included in this newsletter our own wind statistics based on over 4000 data records (source: Windguru) measured from 2009 – 2021.



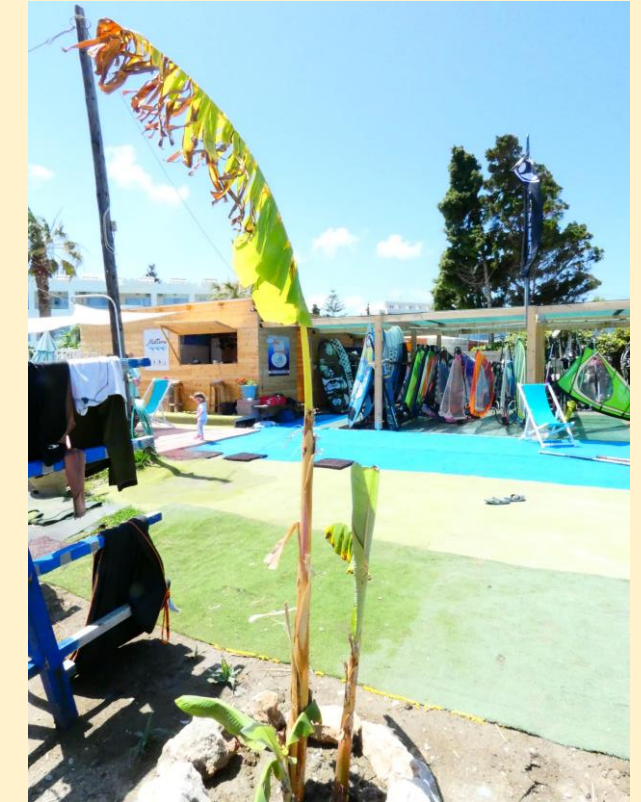


2023: The "ALL NEW" Meltemi

Meltemi managed to rent a plot of land which is not considered as beach front, and therefore does not fall under the restrictive regulation which limits its size. This is great news, and gives us a lot of space for seating and rigging areas, and a long and wide beach directly in front of the station.

Meltemi is now located 50 m downwind of the previous location.

We look forward to welcoming you at the ALL NEW Meltemi Windsurf station.





Anemos 2023 with New Storage Area

Anemos continues its pursuit of constantly modernizing the Paras Beach Apartment also in 2023. You will find several upgrades in the apartments, in the common areas, and the storage area is completely refurbished.

We are ready for the summer 😊



The completely remade storage comes with a hard top, carpeted floor, and dedicated storage place for foil boards, kites and wings.



Anemos Beach

Landscaped Kite Launch Area 50 m upwind of the Apartment House

“Rhodos Treffen” in Waidring January 2023



„Anemos“ is the Greek word for Wind, and „Meltemi“ is the prevailing summer wind on Rhodes; therefore, we have to talk a bit about the wind conditions on Rhodes

We experienced two weeks with unusual low winds in August 2022, which caused me (Martin) to review the historic wind data from 2008 – 2021.

- Are you also fed up with promotional wind statistics?
 - „In the past , the wind was much better“ (like „everything was better in the past“ 😊)
- Most "promotional" statistics lack any sort of background information like:
- how are data measured and recorded, and where was the weather station located?
 - which time span has been reviewed, and which data were selected for review?
 - i. e.: is it sufficient to have a single gust of 16 knots to call it a day of 5 bft?
 - i. e.: did the wind occur during night or day?
 - i. e.: was the wind direction "surfable" ?

Knowingly or not, statistics drive our decisions! But

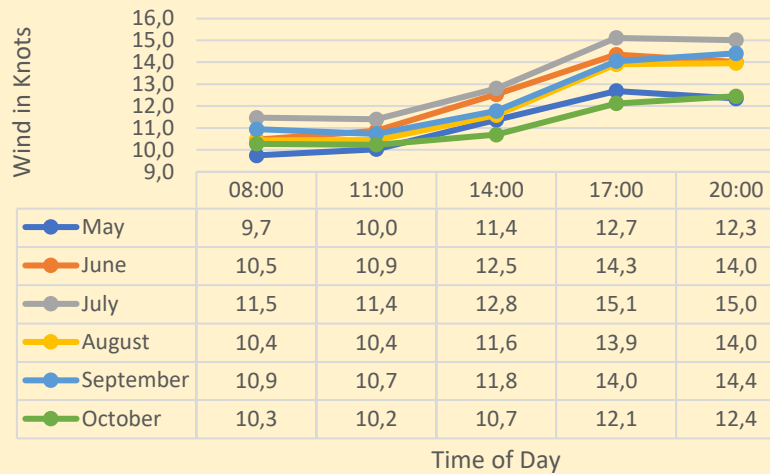
- there is no Database that provides the historic winds ON THE WATER; all below graphs are construed based on measurements onshore.
- Weather is not predictable in the long term, and you will never have any „guaranteed“ wind.
- Representative Statistics (where data source and evaluation methods are disclosed) can show likelihoods, trends and averages.

**THE SOLE PURPOSE OF THIS EXERCISE IS TO SHOW SOME TRENDS;
THE REAL WIND ON THE WATER CANNOT BE DERIVED STATISTICALLY SINCE THERE IS NO WEATHER STATION IN THE SEA!**

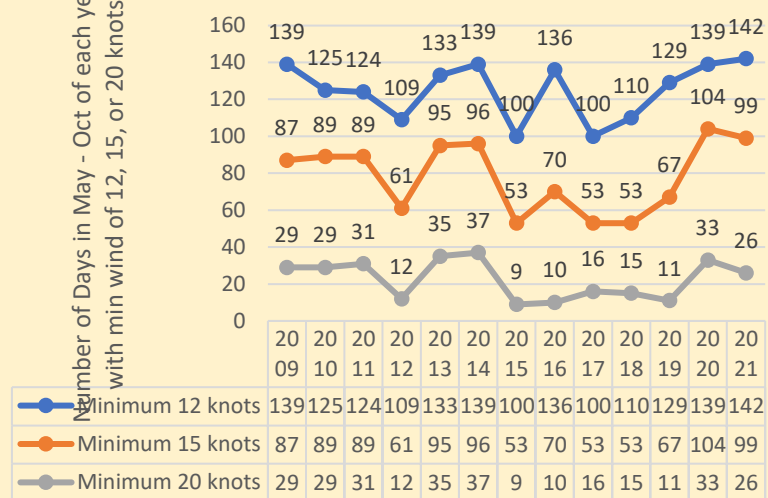
My Conclusions:

- I believe we have stronger winds than shown here, especially a hundred meters out.
 - I did not find any underlying patterns like: cold winter, or low winds in spring to relate to stronger (or less strong) winds in July / August / Sept); the weather just is as it is.
 - There is no indication that winds were stronger in the past; actually, 2020 was the „best“ year of those reviewed (and due to Corona, no traffic on the water 😊)
- Even the strongest months July, August and September can occasionally be below expectation.
 - Average overall likelihood for some nice winds is reasonably high from June to Spetember.
 - Pls let me know if you are interested to learn more about this analysis.
 - I will be more than happy to share the full Excel Sheet, and I am interested in your interpretation or even corrections.

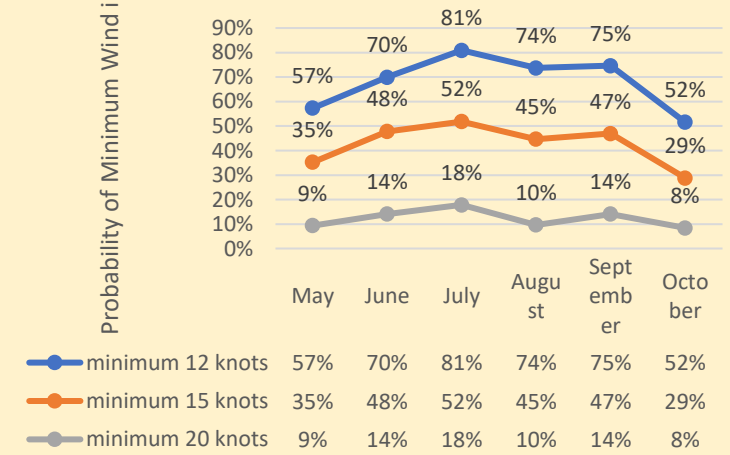
**Average Base Wind per Month;
Daily Pattern from 08:00 - 20:00 hrs**



**Comparison of the Years 2009 - 2021
by number of windy days per year**



**Percentage of Minimum Wind per
Months,
average 2009 - 2021**



Data Source: Windguru 22.11.2008 – 31-12 2021; North Rhodes; measurement of Wind; Wind Gusts; Wind Direction; Cloudiness; Measurements stored every 2 – 3 hours; Exact Location of device not disclosed, but almost certainly located onshore; Measurement algorithm not disclosed, assumed RMS (Root Mean Square)



Stay tuned



Hang Loose,

Martin

Zuzana

Georges

Anemos-Rhodes apartments contacts:
www.anemos-rhodes.com
email: info@anemos-rhodes.com
Zuzana mobile/whatsapp +4915116007011

Meltemi Windsurf Rhodes contacts:
www.meltemi-windsurf-Rhodes.com
email: info@meltemi-windsurf-rhodes.com
Georges mobile/whatsapp +306944243310