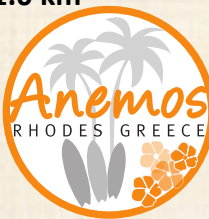
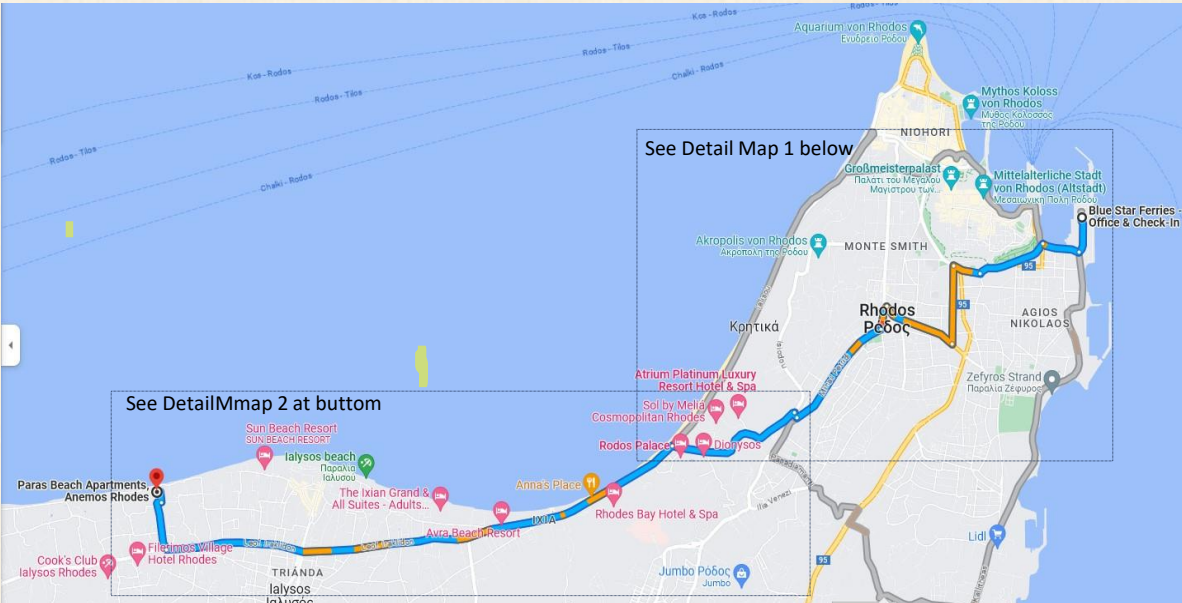


# From Rhodes Ferry Port by Taxi / Car / Rental Car to Anemos / Paras Beach Apartments: 11.0 km



Closest Bus Stop coming from the Airport: <https://maps.app.goo.gl/9F6bDMQnaEUJrLeT9>  
 Closest Bus Stop coming from Rhodes Town: <https://maps.app.goo.gl/8JJs0jYyRUzmUQCu8>  
 Rhodes Transport: <https://www.rodospublictransport.gr/index.php>  
 Bus Schedule: <https://www.rodospublictransport.gr/index.php?c=schedule&p=pdf>

GPS Coordinates 36.420952, 28.141847  
 Google Maps <https://maps.app.goo.gl/nYozyLCQ4tMiFrUH6>



### Detail Map 1

1. Turn **RIGHT** when leaving the Port Aera (Tour Point Port „0“ km)
2. Turn **LEFT** towards Faliraki (after 350 m from Port)
3. Keep **Right** after 1 km (from Port)
4. Turn **LEFT** (1.3 km from Port)
5. Turn **RIGHT** (2.0 km from Port)
6. Turn **LEFT** (2,7 km from Port)
7. Turn **RIGHT**(2,9 km from Port)
8. Turn **Right** and thereafter turn **immediately LEFT** (4 km from Port)
9. Turn **LEFT** (5,4 km from Port)



### Detail Map 2

10. Follow the road along the Coast for 5,0 km (5.4 to 10.4 km from Port)
11. Turn **RIGHT** at Antonis Restaurant (10.4 km from Port)
12. Follow the road towards the beach (11.0 km from Airport).

### Welcome at Anemos

